

SPECIFICATIONS (See notes 1 and 2)

Loudspeaker Type: 2-way, Electronically controlled full-range
Operating Range: 95 Hz - 18 kHz, 125 Hz - 18 kHz (+/-3dB)

Max Input (Passive):

120W continuous, 300W program
 31 volts RMS, 69 volts momentary peak

Recommended Power Amp: 250W to 360W @ 8 Ohms

Max Inputs (Biamp):

LF: (Same as for Passive mode)
 Recommended LF Power Amp: (Same as for Passive mode)
 HF: 20W continuous, 50W program
 13 volts RMS, 28 volts momentary peak
 Recommended HF Power Amp: 40W to 60W @ 8 Ohms

Sensitivity 1W/1m: 103 dB SPL (100 Hz - 16 kHz 1/3 octave bands)
 104 dB SPL (250 Hz - 4 kHz speech range)

Maximum Output: 124 dB SPL / 131 dB SPL (peak)

Nominal Impedance (passive): 8 Ohms

Min Impedance: 5.7 Ohms @ 1600 Hz

Nominal Impedances (Biamp): LF: 8 Ohms, HF: 8 Ohms

Nominal -6 dB Beamwidth:

80° H (+17° / -16°, 1 kHz - 16 kHz)
 50° V (+20° / -19°, 1 kHz - 16 kHz)

Axial Q / DI: 15.5 / 11.9, 1 kHz - 16 kHz

Crossover Frequency: 1.8 kHz

Recommended Signal Processing:

1.8 kHz crossover (for biamp)
 80 Hz high pass filter

Drivers (Ferrofluid-cooled):

LF (2) 6.5" cast frame
 HF (1) VHF100 1" exit, non-metallic diaphragm

Driver Protection: PowerSense™ DDP

Input Connection: (2) Neutrik NL4MP
 (2) dual banana jacks

Controls: Passive / Biamp switch

Enclosure: 13-ply 18 mm Baltic birch, Polane painted (see options)

Enclosure Hardware:

(1) steel, recessed bar handles

Mounting / Rigging Provisions:

(8) 3/8-16 rigging points, W.L.L. 300 lb. vertical pull each
 (3) Pull-back point, W.L.L. 60 lb.
 (4) 5/16-18 inserts for mounting bracket *
 (2) 5/16-18 inserts for stand adapter **

Grille: 16 gauge perforated steel (see options)

Required Accessories: Electronic speaker controller

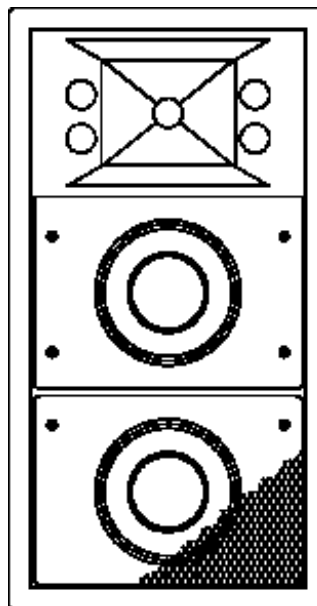
Supplied Accessories: (4) Rubber feet with mounting screws

Optional Accessories: 3/8EYBLTKIT: (4) forged 3/8-16 eyebolts

Dimensions:
 Height: 20.4 in. / 519 mm
 Width (front): 10.8 in. / 275 mm
 Width (rear): 6.7 in. / 171 mm
 Depth: 11.2 in. / 286 mm

Weight: 45 lbs. / 20.4 kg

Shipping Weight: 53 lbs. / 24 kg



20.4 in.
 519 mm

APPLICATIONS:

- Houses of Worship
- Performing Arts Centers
- Theaters
- Dance Clubs
- Portable SR Systems

DESCRIPTION

The Community Solutions SLS915 loudspeaker is a high output, high sensitivity, horn-loaded, two-way, full-range loudspeaker system with an integral one-piece fiberglass baffle of Wavefront Coherent™ design. It is uniquely suited for excellent voice-only systems where intelligibility has been a problem in the past. Engineered for use in permanent installations, yet easily portable, the loudspeaker enclosure is constructed of void-free, heavily braced Baltic birch plywood with integral steel bracing connected to threaded 3/8 in. nuts which provide robust suspension points for vertical or horizontal mounting. The system may be used in passive mode or switched for bi-amplification. Available in black or white with white grille cover, with or without handles. Five year limited warranty. Use with Community SBS Series loudspeaker. Electronic speaker controller required.

OPTIONS:

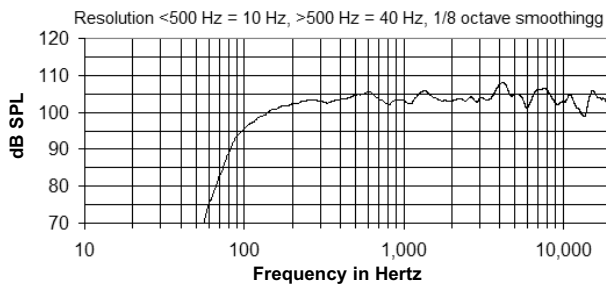
SLS915 = Black paint with handles, no grille cloth.
 SLS915WHT = White paint, no handles, white grille cloth

1. **Sensitivity:** Free field pink noise measurement at 20 ft / 6.1 m at 25% power; extrapolated to 1 meter and an input of 2.83 volts RMS.
 2. **Watts:** All wattage figures are calculated using the rated nominal impedance.

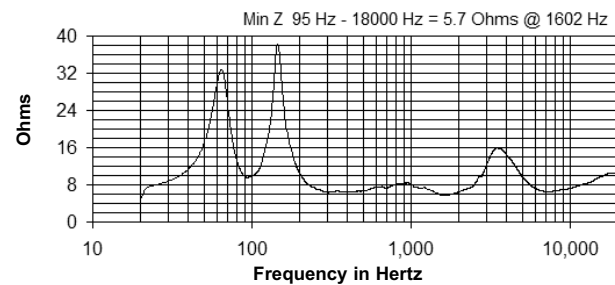
* e.g. Ultimate Support BMB200K

** e.g. Omnimount 100 Series

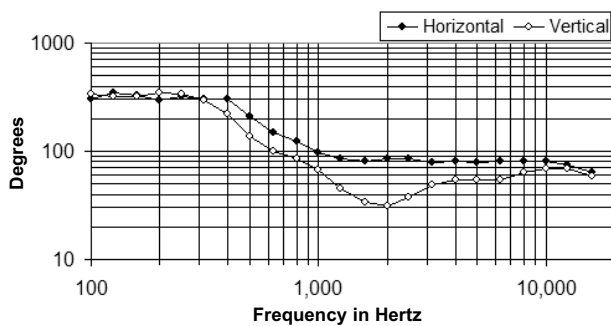
FREQUENCY RESPONSE (WITH CONTROLLER)



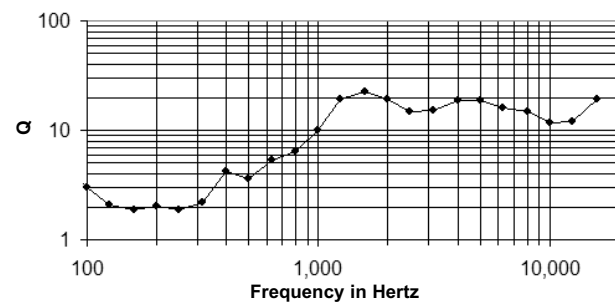
IMPEDANCE



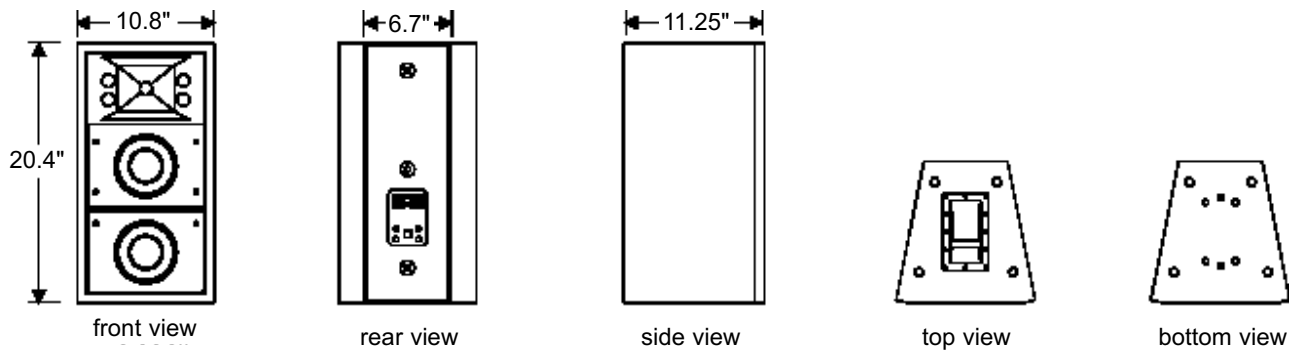
BEAMWIDTH



AXIAL Q



DIMENSIONS



ARCHITECTS' AND ENGINEERS' SPECIFICATIONS

The loudspeaker system shall be a horn-loaded, two-way, full-range bass reflex trapezoidal design with two 6.5 in. Ferrofluid-cooled woofers and one 1 in. exit HF driver with a non-metallic diaphragm mounted on a fiberglass waveguide. Drivers shall be connected to an integral crossover with a crossover frequency of 1800 Hz and integral over-current protection circuitry using high positive current coefficient resistors. There shall be two Neutrik NL4MP and two dual banana input connectors. The loudspeaker enclosure shall be well-braced 18 mm 13-ply Baltic birch with a 16 gauge perforated steel grille [with white grille cloth] and finished with black [white] paint. There shall be eight 3/8-16 integral threaded mounting points connected to internal steel bracing. The system shall have an amplitude response of 125 Hz to 18 kHz (+/- 3 dB), input capability of 31V RMS, 103 dB sensitivity at one meter and 2.83V / 8 ohms nominal impedance. The nominal dispersion shall be 80° H x 50° V from 1 kHz to 16 kHz. The loudspeaker shall be 20.4 in. (519 mm) H x 10.8 in. (275 mm) W (front) x 6.7 in. (171 mm) W (rear) x 11.25 in. (286 mm) D and weigh 45 lbs. (20.4 kg).

Specifications subject to change without notice.