

# Community



## Description

The VERIS 28T is a two-way, full-range loudspeaker system suitable for use in a wide range of constant voltage applications. Its low-loss, low distortion internal autoformer provides the system designer with great flexibility. The four power taps allow a 9 dB range of level control in 3 dB increments.

The versatile 28T is ideal for distributed systems such as those found in cafes, restaurants, shopping centers and airports. With its powerful dual cone drivers, the VERIS 28T provides additional low frequency and mid-range output over that of its sister product, the VERIS 8T.

When paired with a subwoofer such as the VERIS 210S, a VERIS 28T system will produce high-fidelity, broad spectrum sound that belies its modest size.

In addition to distributed systems, the VERIS 28T is an excellent choice for ancillary delay applications. When used to augment a FOH system in venues such as auditoria, theatres, and houses of worship, delay speakers can significantly even-out the difference in sound pressure level from the front of the room to the rear of the room. Units may be positioned for underbalcony fill, overbalcony fill, or simply placed towards the rear of the seating areas. By deploying VERIS 28T loudspeakers in such a manner, the system designer will have far greater control over relative levels and relative tonal response when commissioning and equalizing the installation.

The VERIS 28T may be mounted to a wall or ceiling surface with a yoke bracket (included), suspended from its M6 threaded rigging points, or installed using an OmniMount™ Series 60 mounting device.

## Applications

- Shopping Malls
- Airports
- Delay Fill
- Restaurants
- Pubs
- Cafes
- Houses of Worship

## Features

**Internal Autoformer for 70V / 100V installations**

**Black or White Finish Available**

**Ferrofluid Treated HF Driver for Improved Heat Dissipation**

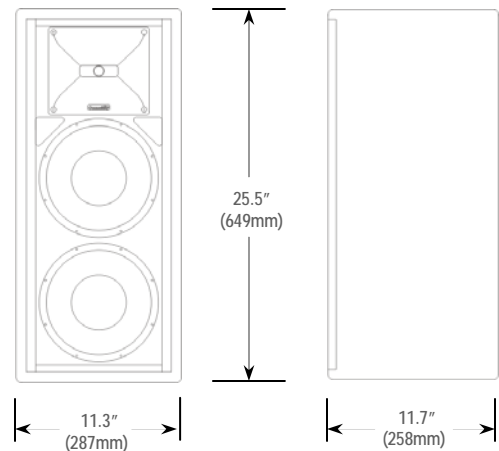
**Non-Resonant, Non-Metallic HF Diaphragm for Reduced Distortion**

**Carbon Ring Cone Technology Provides 30% More Piston Area with Increased Excursion Capability**

**Terminal Strip Connection w/ 25W, 50W, 100W & 200W Taps**

# VERIS 28T

TWO-WAY 70V / 100V LOUDSPEAKER SYSTEM



## SYSTEM

**Format:** Two-way full-range, vented bass, trapezoidal, equipped with autoformer for 70V / 100V systems

**Operating Range:** 70 Hz - 18 kHz

**Frequency Response:** 90 Hz - 10 kHz ( $\pm 4$  dB)

**Dispersion (-6 dB):** 90° H x 70° V (in vertical position)

**Crossover Frequency:** 2 kHz

**Maximum SPL @1m:** 115 dB continuous

**Sensitivity in SPL:** 92 dB (125 Hz - 10 kHz, 1/3 octave)  
92 dB (250 Hz - 4 kHz, speech range)

**Max Power Handling:** 200W RMS (70V / 100V)

**Autoformer Taps:** 25W, 50W, 100W, 200W

**Connectors:** Terminal Strip

## TRANSDUCERS

**Low Frequency:** Dual 8" (203mm) 150W RMS  
375W Program, 8 $\Omega$

**High Frequency:** 3/4" (19mm) 50W RMS  
125W Program, 8 $\Omega$

## MECHANICAL

**Enclosure:** Trapezoidal (22.5° included angle)  
11-ply cross-laminated birch

**Finish:** Black or white catalyzed polyester paint (specify at time of ordering)

**Rigging Provisions:** (9) M6 threaded rigging fittings<sup>1</sup>  
(4) M6 threaded fittings for V-HSS  
(4) M8 threaded fittings for OmniMount™ 60 bolt pattern; yoke bracket included

**Grille:** Powder coated steel, black or white

**Dimensions:** 25.5" (649mm) x 11.3" (287mm) x 11.7" (298mm)

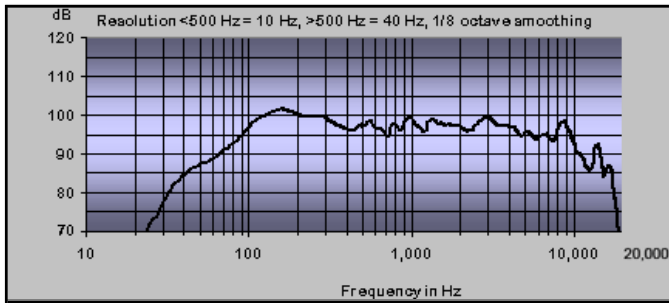
**Net Weight:** 35 lbs / 15.9 kg

<sup>1</sup> Due to ongoing development, specifications are subject to change without notice.

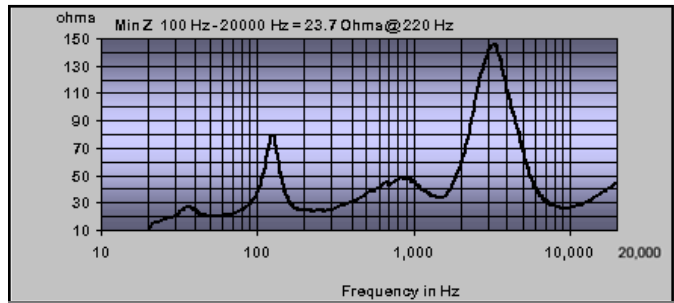
<sup>1</sup> 100 lbs / 45.4 kg per point in straight line, 10:1 safety factor.

# VERIS 28T

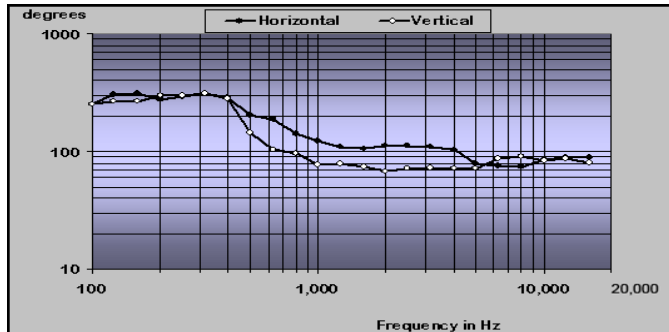
TWO-WAY 70V / 100V LOUDSPEAKER SYSTEM



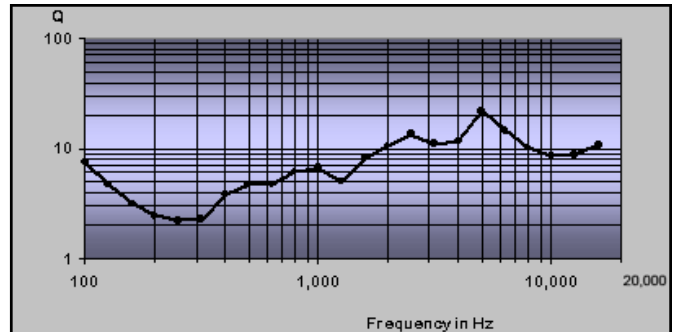
**Amplitude versus Frequency (in free space)**



**Impedance versus Frequency**



**Directivity Index**



**Axial Q**

**Recommended Power: 200 WRMS at 70V**

**Recommended High-Pass Filter: 70 Hz\***

\*24 dB / octave or higher

## Installation Accessories



**VERIS Handle & Stand Socket**  
Attaches to Omni-Mount™ Series 30 fasteners.



**Tilting Bracket**  
Allows precise angling of a VERIS loudspeaker.



**Seat Track Kit**  
Quick and easy way to fly VERIS enclosures.



**Yoke Bracket**  
Provides 0°, 10°, & 20° inclination to wall surface.



**Tilting Brackets**  
Multiple brackets may be used to position one loudspeaker below another.



**Eyebolt Kits**  
Suspend VERIS enclosures safely and easily.



**Ceiling Mount Kit**  
Derives a hang point from a ceiling surface.

Community Professional Loudspeakers, 333 East Fifth Street, Chester, PA USA 19013-4511  
TEL: 610-876-3400 · FAX: 610-874-0190 · [www.communitypro.com](http://www.communitypro.com)