

Community



Description

The VERIS 28 is a two-way, full-range loudspeaker system suitable for use in a wide variety of fixed installations.

This versatile unit is ideal for distributed systems such as those found in cafes, restaurants, shopping centers and airports. With its powerful dual cone drivers, the VERIS 28 provides additional low frequency and mid-range output over that of its sister product, the VERIS 8.

When paired with a subwoofer such as the VERIS 210S, a VERIS 28 system will produce high-fidelity, broad spectrum sound that belies its modest size.

In addition to distributed systems, the VERIS 28 is an excellent choice for ancillary delay applications. When used to augment a FOH system in venues such as auditoria, theatres, and houses of worship, delay speakers can significantly even-out the difference in sound pressure level from the front of the room to the rear of the room. Units may be positioned for underbalcony fill, overbalcony fill, or simply placed towards the rear of the seating areas. By deploying VERIS 28 loudspeakers in such a manner, the system designer will have far greater control over relative levels and relative tonal response when commissioning and equalizing the installation.

The VERIS 28 may be mounted to a wall or ceiling surface with a yoke bracket (included), suspended from its M6 threaded rigging points, or installed using an OmniMount™ Series 60 mounting device.

Applications

- Restaurants
- Pubs
- Cafes
- Houses of Worship
- Shopping Malls
- Airports
- Delay Fill

Features

Internal DYNA-TECH™ Dynamic Driver Protection Circuitry

Black or White Finish Available

Ferrofluid Treated HF Driver for Improved Heat Dissipation

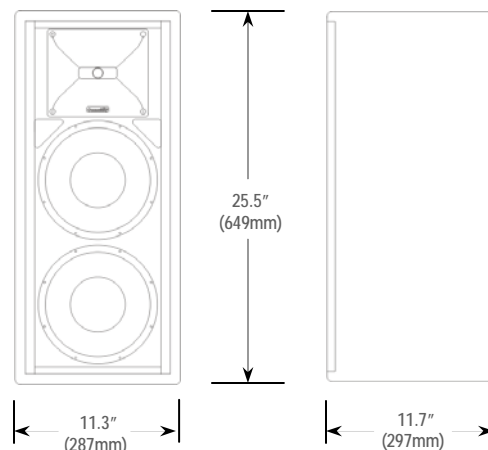
Non-Resonant, Non-Metallic HF Diaphragm for Reduced Distortion

Carbon Ring Cone Technology Provides 30% More Piston Area with Increased Excursion Capability

Terminal Strip and NL4 Compatible Connectors

VERIS 28

TWO-WAY FULL-RANGE LOUDSPEAKER SYSTEM



SYSTEM

Format: Two-way full-range, vented bass, trapezoidal, dual cone drivers

Operating Range: 70 Hz - 18 kHz

Frequency Response: 90 Hz - 10 kHz (± 4 dB)

Dispersion (-6 dB): 90° H x 70° V (in vertical position)

Crossover Frequency: 2 kHz

Maximum SPL @1m: 118 dB continuous / 125 dB peak

Sensitivity in SPL: 93 dB (125 Hz - 10 kHz, 1/3 octave)
(1W/1m, free space) 93 dB (250 Hz - 4 kHz, speech range)

Max Power Handling: 300W RMS (34.6V)
750W Program / 1485W Peak

Impedance: Nominal 4 Ω / Min. 4.5 Ω at 210 Hz

Connectors: Terminal Strip and NL4 Compatible

TRANSDUCERS

Low Frequency: Dual 8" (203mm) 150W RMS
375W Program, 8 Ω

High Frequency: 3/4" (19mm) 50W RMS
125W Program, 8 Ω

MECHANICAL

Enclosure: Trapezoidal (22.5° included angle)
11-ply cross-laminated birch

Finish: Black or white catalyzed polyester paint (specify at time of ordering)

Rigging Provisions: (9) M6 threaded rigging fittings¹
(4) M6 threaded fittings for V-HSS
(4) M8 threaded fittings for OmniMount™ 60 bolt pattern;
yoke bracket included

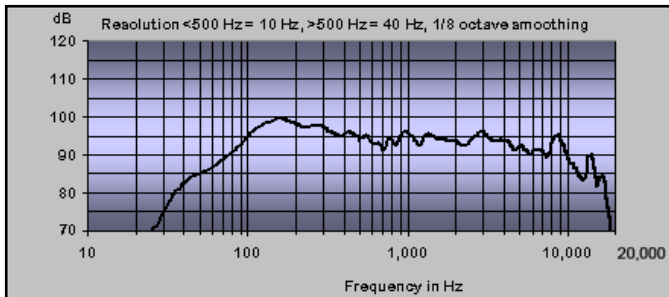
Grille: Powder coated steel, black or white

Dimensions: 25.5" (649mm) x 11.3" (287mm) x
11.7" (298mm)

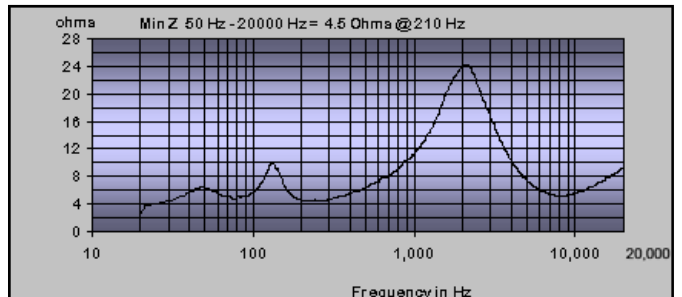
Net Weight: 31 lbs / 14.1 kg

VERIS 28

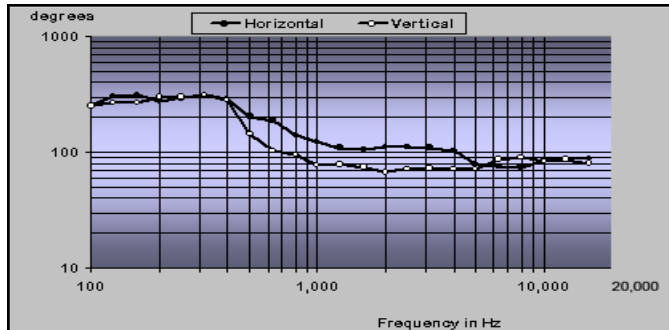
TWO-WAY FULL-RANGE LOUDSPEAKER SYSTEM



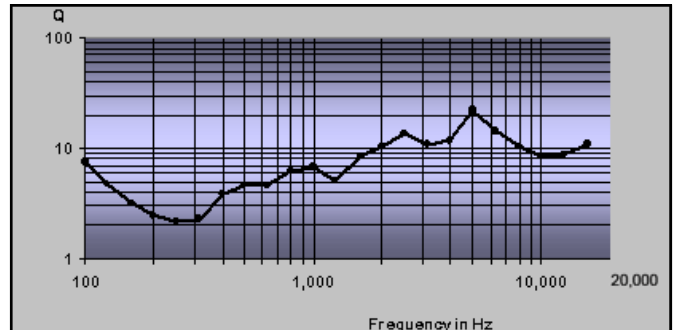
Amplitude versus Frequency (in free space)



Impedance versus Frequency



Directivity Index



Axial Q

Recommended Power: 630 - 900 WRMS at 4Ω

Recommended High-Pass Filter: 70 Hz*

*24 dB / octave or higher

Installation Accessories



VERIS Handle & Stand Socket
Attaches to Omni-Mount™ Series 30 fasteners.



Tilting Bracket
Allows precise angling of a VERIS loudspeaker.



Seat Track Kit
Quick and easy way to fly VERIS enclosures.



Yoke Bracket
Provides 0°, 10°, & 20° inclination to wall surface.



Tilting Brackets
Multiple brackets may be used to position one loudspeaker below another.



Eyebolt Kits
Suspend VERIS enclosures safely and easily.



Ceiling Mount Kit
Derives a hang point from a ceiling surface.

Community Professional Loudspeakers, 333 East Fifth Street, Chester, PA USA 19013-4511
TEL: 610-876-3400 · FAX: 610-874-0190 · www.communitypro.com